

## **PRONET SWITCHING SOLUTIONS**

Proteon's ProNET Switching products are next generation switching solutions for high performance networking in Ethernet and Token Ring environments. The ProNET Client Server eXchange (CSX) Switching Family, together with ProNET/E Series 80 Ethernet Switching Hubs, deliver the performance, dependability, and affordability you need to build your network today and extend it into the future.

### **TRANSITION TO SWITCHED LANs AND INTERNETWORKS**

Shared media LANs are being overwhelmed by growing numbers of network users, more powerful workstations and servers, and bandwidth-intensive applications that have increased traffic, created bottlenecks, and degraded performance. Switching boosts network throughput and alleviates network congestion by dividing the LAN into segments, and separating large traffic volumes into smaller flows that are efficiently directed to their destination segment.

Switching offers performance benefits to all levels of the network. At the desktop level, LAN switches, deployed just like hub concentrators, maximize access to common resources for optimized client/server connectivity. Client stations gain switched desktop access, and servers secure dedicated port connectivity for increased bandwidth. At department and backbone levels, LAN switches replace bridges and provide LAN segmentation to expand aggregate network capacity and maximize traffic efficiency.

### **PROTEON UNLEASHES THE POWER OF SWITCHING**

For more than a decade, Proteon has been delivering industry-leading innovative technology solutions. Proteon continues this tradition with new classes of networking products that merge switching with complementary LAN and WAN technologies to meet the demands for low-cost, high-

The Proteon logo consists of the word "proteon" in a bold, lowercase, sans-serif font. A horizontal line is positioned directly beneath the letters "o", "t", "e", and "o".

performance, switched local and wide area networking. The integration of proven, well-known repeater, switching, routing, and ASIC processor technologies, enables Proteon to deliver premium functionality and performance at affordable prices — for the best switching product values on the market.

### **INSTALLATION AND MANAGEMENT SIMPLICITY**

All Proteon switching products are engineered for easy installation, management, and reduced network operation costs. With ProNET switching systems, you power on the unit and walk away. Auto-sensing and auto-configuring LAN ports enable plug-and-play setup, and factory default settings automate device configuration.

Management capabilities are tailored to the applications environment. Features range from self-management to meet small workgroups' requirements for very simple management, to standards-based SNMP, Telnet or RMON to satisfy the needs of large distributed internetworks. Users can easily maintain CSX and Series 80 Switching Hub systems, eliminating the need for on-site technical personnel.

Proteon switches work with your existing computing infrastructure so that no changes are required to your equipment, applications, or cabling. This helps your business realize the benefits of higher speed networking and lower overall network ownership costs.

## EXPANDABILITY FOR THE FUTURE

Built-in expansion capabilities supply the flexibility to meet your future network requirements. CSX and Series 80 systems can be daisy chained to support additional users and network connections. High speed uplinks are provided to connect to servers or to the backbone network, or to inexpensively migrate to higher speed technologies such as FDDI, 100VG-AnyLAN, 100BaseTx, and ATM.

## CSX 900E ETHERNET SWITCHING CONCENTRATOR

The CSX 900E Ethernet Switching Concentrator integrates repeater hub and LAN switching technologies into a single product that provides dramatic throughput improvement over shared LAN hubs for a fraction of the price of LAN switches. The CSX 900E features 24 "private" 10BaseT ports for single client port connectivity. Two 10/100 BaseT Mbps "fat pipe" ports offer dedicated, high speed, switched connections to servers, backbone uplinks, daisy chain expansion, or shared LANs.

## CSX 900ER REMOTE ETHERNET SWITCHING ROUTER

The CSX 900ER Remote Ethernet Switching Router combines LAN switching and multiprotocol routing together

in a single device that provides high performance client/server connectivity for remote workgroups. The CSX 900ER includes 24 switched 10BaseT ports for high performance client connectivity, two 10/100BaseT ports for high speed server connectivity or extended LAN access, and two integral WAN ports for remote access routing. The CSX 900ER integrates Proteon's next generation switching with its award winning OpenROUTE internet-working routing software into one, easy to install and manage network system.

## CSX 901T TOKEN RING SWITCH

The CSX 901T is a robust Token Ring switch that is well suited for workgroup, building, or campus backbone network environments. The CSX 901T segments Token Ring LANs to dramatically increase bandwidth and reduce ring congestion. The CSX 901T features 12 token ring ports and an expansion slot for high speed uplinks. Each port offers a dedicated 4/16 Mbps bandwidth path for connecting client workstations, servers, concentrators, or other switches. Ports can also operate in full duplex mode to double the available bandwidth to 32 Mbps. The CSX 901T uses store-and-forward, cut-through, and adaptive cut-through switching modes to maximize data transfers and network utilization.

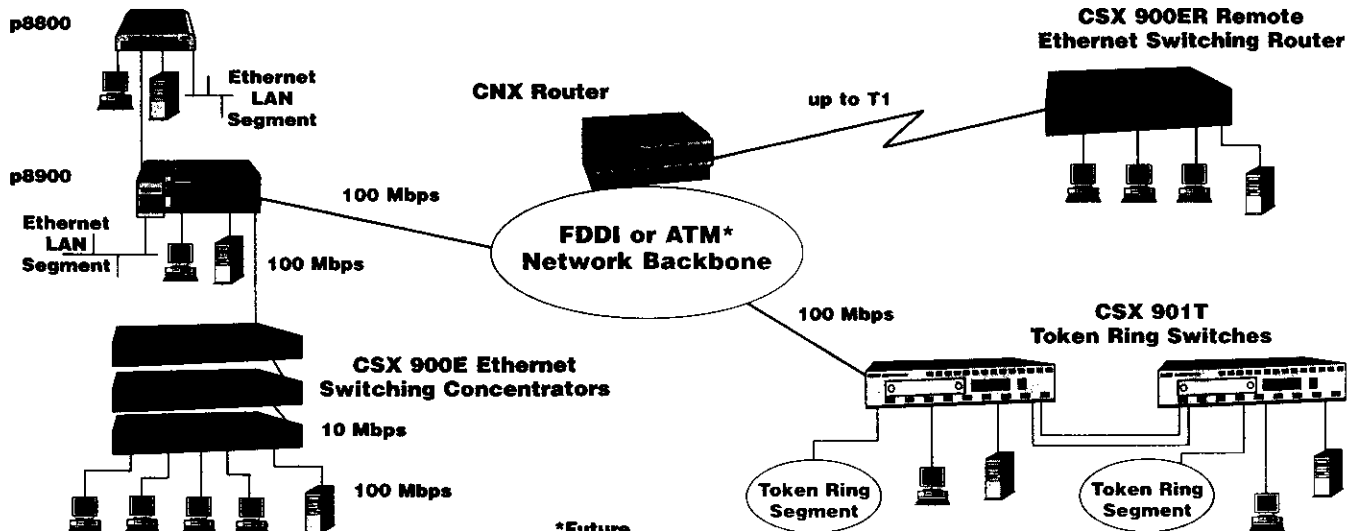
## SERIES 80 P8800 AND P8900 ETHERNET SWITCHING HUBS

The Series 80 Ethernet Switching Hubs are high performance, multiport bridging switches. The p8800 is a compact, cost-effective, fixed configuration Ethernet switch that is ideal for small, independent workgroups with bandwidth-intensive applications. It delivers wire speed filtering and forwarding across all ports. The p8800 includes eight 10BaseT ports for station connections, and an AUI port for backbone network connections.

The high-performance p8900 is a 16-port switch that is ideal for departmental or enterprise applications. The p8900 segments the LAN to increase the bandwidth on each segment to 10 Mbps, and provides full wire speed transparent bridging from any port to any other port. The p8900 features sixteen 10BaseT ports to connect to workstations or network segments. The p8900 also includes two option slots which connect to high speed LAN servers or backbone networks, and support single-attach and dual-attach FDDI, 100VG-AnyLAN, and 100 BaseTx option cards.

## PROTEON SWITCHING SOLUTIONS

### Series 80 Ethernet Switching Hubs



<b>PRODUCT</b>	<b>APPLICATIONS ENVIRONMENT</b>	<b>PORTS &amp; MEDIA SUPPORT</b>	<b>SWITCHING METHOD</b>
<b>CSX 900E ETHERNET SWITCHING CONCENTRATOR</b>	Standalone Ethernet Workgroups: <ul style="list-style-type: none"> <li>• Turbo-charged desktop connections</li> <li>• High speed dedicated "fat pipes" for server and expansion connectivity</li> </ul>	24 10BaseT ports 2 10/100BaseTx ports	Store-and-forward
<b>CSX 900ER REMOTE ETHERNET SWITCHING ROUTER</b>	Remote Ethernet Workgroups: <ul style="list-style-type: none"> <li>• Desktop switching</li> <li>• High speed dedicated "fat pipes" for server and expansion capacity</li> <li>• Full function remote routing</li> </ul>	24 10BaseT ports 2 10/100BaseTx ports 2 WAN Ports	Store-and-forward
<b>CSX 901T TOKEN RING SWITCH</b>	Token Ring Workgroup, Premises, or Backbone Environments: <ul style="list-style-type: none"> <li>• LAN segmentation</li> <li>• Mixed speed support (4/16 Mbps)</li> </ul>	12 UTP/STP ports 1 option slot	Store-and-forward Cut-through Adaptive cut-through
<b>P8800 FIXED ETHERNET SWITCHING HUB</b>	Small Ethernet Workgroups: <ul style="list-style-type: none"> <li>• LAN segmentation</li> <li>• Backbone network connection</li> </ul>	8 10BaseT ports 1 AUI connection	Store-and-forward
<b>P8900 ETHERNET SWITCHING HUB</b>	Ethernet Workgroups or Premises: <ul style="list-style-type: none"> <li>• LAN segmentation</li> <li>• High speed uplinks</li> </ul>	16 10BaseT ports 2 option slots	Store-and-forward

## **ORDERING INFORMATION**

<b>P900-8000</b>	CSX 900E Ethernet Switching Concentrator
<b>P900-8100R</b>	CSX 900ER Remote Ethernet Switching Router
<b>P900-7200</b>	CSX 901T Token Ring Switch
<b>P8800</b>	ProNET/E Series 80 8-port Switching Hub
<b>P8900</b>	ProNET/E Series 80 16-port Switching Hub
<b>P8910-HA</b>	FDDI Single Attach Support (SAS) Option for p8900
<b>P8910-HB</b>	FDDI Dual Attach Support (DAS) Option for p8900
<b>P8920-HA</b>	100VG-AnyLAN Option for p8900
<b>P8930-HA</b>	100BaseTx Option for p8900



**Corporate Headquarters**

Proteon, Inc.  
Nine Technology Drive  
Westborough, MA 01581-1799  
Tel: 508-898-2800  
Worldwide Web URL: <http://www.proteon.com>  
Info Faxback: 800-545-7464 (North America)  
508-836-5321 (International)  
Email: [pro@proteon.com](mailto:pro@proteon.com)

**European Headquarters**

Proteon International, Ltd.  
Lockingon Hall  
Lockingon  
Derby  
DE74 2RH  
England  
Tel: 44-1509-670444  
Fax: 44-1509-670602

**Asia Pacific Headquarters**

Proteon Networks Pte. Ltd.  
30 Bideford, #02-02  
Thongsia Building  
Singapore, 0922  
Tel: 65-732-2727  
Fax: 65-733-8522

**Sales Offices**

Pleasanton, CA  
Irvine, CA  
Jupiter, FL  
Atlanta, GA  
Hoffman Estates, IL  
Westborough, MA  
Glen Burnie, MD  
New York, NY  
Dallas, TX  
Houston, TX  
Reston, VA  
North Sydney, Australia  
Toronto, Canada  
Hong Kong, China  
Derby, England  
Sophia Antipolis, France  
Kelkheim, Germany  
Singapore

**Telephone**

510-463-4846  
714-727-2467  
407-747-6067  
770-951-4841  
708-882-7020  
508-836-8600  
410-760-4340  
212-661-3330  
214-746-5566  
713-267-2300  
703-709-9190  
61-29-955-8555  
416-363-8442  
852-2815-1960  
44-1509-670044  
33-92-94-48-30  
49-6195-901-011  
65-732-2727

**Fax**

510-463-5680  
714-727-2463  
407-743-2339  
770-951-4842  
708-882-4379  
508-898-2844  
410-761-4942  
212-661-3396  
214-746-5571  
713-780-9504  
703-709-9317  
61-29-955-8355  
416-363-6518  
852-2542-4663  
44-1509-670637  
33-92-94-47-62  
49-6195-900-934  
65-733-8522

Specifications subject to change without notice.

Copyright ©1995 by Proteon, Inc.

All rights reserved. Printed in the U.S.A.

Proteon is a registered trademark, and the Proteon logo, ProNET, and OpenROUTE are trademarks of Proteon, Inc. All other trademarks are property of their respective owners.

DATA SHEET/0124/10.95/5.0